

Clash **STEEL**

- If quality matters -



PRO-Series



Space Black

Nickel



Playing Area

7-foot: 203,2 x 101,6cm

9-foot: 254 x 127cm

The Pro Series is developed with no compromises on quality. That is why we use oak and aluminum for our rails, premium Brazilian FST 30mm slate, industry-leading rubber, our specially designed pocket liner, and a steel-reinforced base frame—along with many other high-end details that make this, one of the finest built tables on the market.

Many pool clubs use their tables for over 40 years. You only get one chance to choose the right table—so “if quality matters”, make the right choice.

Clash was launched in 2002 and is designed and developed by Loontjens Billiards, a family-owned company founded in 1920. In addition to Clash, Loontjens manufactures Horemans carom tables and, for over 20 years, was the owner of the Gabriels brand. This extensive know-how in table manufacturing is reflected in the quality and craftsmanship of every Clash model.



Made in EU

We source mainly from European manufacturers who share our commitment to quality. Regular supplier visits ensure the highest standards, delivering an exceptional final product.

Standard Options

Steel frame

We have redesigned the billiard table with our revolutionary Unibody steel frame. Engineered for unmatched stability, it allows faster installation, reduce noise, and precise leveling with 24 adjusters for excellent gameplay



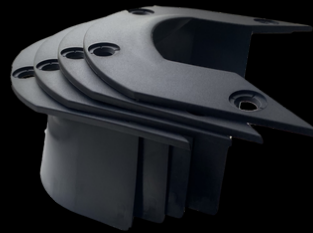
Slates

Brazilian FST (flatness standard) slate, 30mm thickness with pine wood frame



Pro liners

Our premium pocket liners feature top-bottom mounting for a clean impact area when the ball enters the pocket. The slanted design ensures potted balls stay in the pocket without jumping out



Pro pockets

Each pocket bag contains a full set of balls.



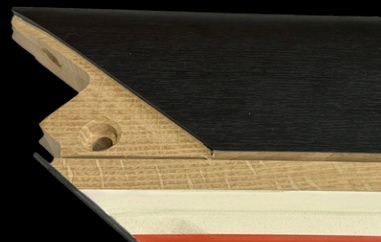
Artemis no.66

Out of top brands cushion rubber we have selected Artemis rubber (made in Germany) for their superior quality and perfect fit with true rebound



Constructed oak

The rails are crafted from carefully selected high-quality oak, ensuring strength, durability, and stable, predictable ball movement for an enhanced playing experience

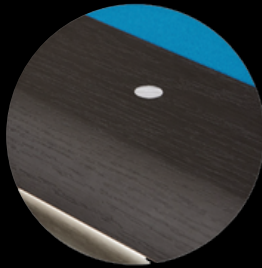


Upgrade your Clash steel pro Table

Standard

Black

The standard black finish



Nickel casting

The standard nickel casting provides a classic and shiny look



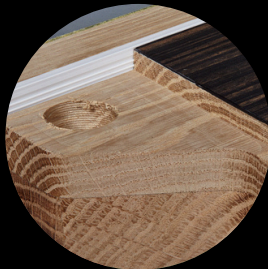
Standard pocket width

Corner 4.5 inches (11,63cm)
Middle 5 inches (12,9cm)



Oak rails

Constructed in high quality oak for a natural solid feel



Original logo

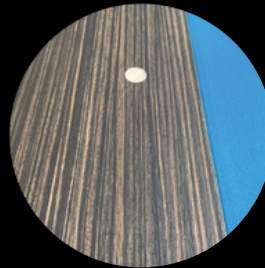
Our standard branding logo



Upgrade

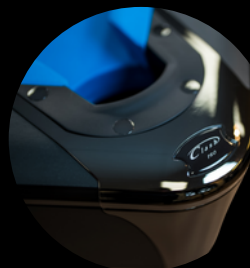
Ebony

Ebony finish for a more refined appearance



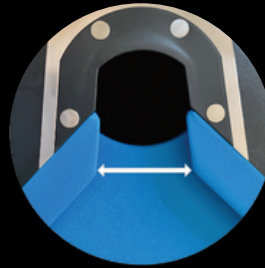
Space black casting

The space black casting gives a luxurious appearance and more modern aesthetic



Custom pockets width

Customize to match your playing preferences (min. order 10 tables)



Aluminum rails

Aluminum-constructed rails for enhanced durability



Personal logo

Add your own logo for a personalized and unique touch





Upgrade Your Table with the Clash Pro Conversion Kit



Give your table a new life with a professional upgrade using our conversion kit! An experienced craftsman can complete the job on-site—simply mount and align the supplied thread inserts with the existing slate's drilling pattern and enjoy a refreshed playing experience.

The Clash Pro conversion kit has the following parts:

- Clash Pro rails – constructed in oak and finished in black grained HPL finish, included with Artemis No. 66 rubbers (for optimal bounce and precision) and PVC made cloth strips
- Clash Pro Nickel castings
- Clash aprons, including nickel corners
- Clash Pro pocket liners top & bottom mounting
- Clash Pro pocket bags
- Set of thread inserts for mounting rails

Upgrade your table and take your game to the next level!



Industrieweg 7B, 4338 PR Middelburg, The Netherlands - tel +31 (0)118 611 455 - info@clashpool.com
www.clashsteel.com